



Michigan Ave. / Jerome Rd. / Williams St., Alma, Gratiot County, Michigan, USA



Site Information



Infrastructure



Community



Transportation

****SEE MAP ON REVERSE****

- Fully developed
 - Class A Roads
 - Available properties:
 - Lot 7/8 (North): 6,000 sq. ft. bldg. on 4.38 acres (Privately owned)
 - Unplatted Lot: 3.63 acres (Owned by Alma Industrial Development)
 - Incentives:
 - Industrial Development District
 - Foreign Trade Zone #275 Member
 - Brownfield Redevelopment (site must be eligible)
- *Other programs may be applicable.

- Electric: Consumers Energy
 - Low voltage up to 3 MW
 - High voltage (46 kV): 3 to 12 MW (99.996% rel.)
 - High voltage (138 kV): 12-100 MW (99.999% rel.)
 - 46 kV substation adjacent to Park, 138 kV nearby
- Gas: Consumers Energy
 - 8" high pressure parallel to site
 - Transmission lines run through Park
 - 200 psig natural gas pressure and up to 1,000 MCFH available
- Municipal water, 12" line
- Municipal sewer, 8" line
- Access to fiber service
- Rail adjacent to Park

- Gratiot County (est.):
 - Population: 41,500
 - Labor force: 17,000
 - Unemployment rate: 5.6%
 - Commuter labor force:
 - 30-miles: 125,000
 - 60-miles: 1,200,000
- Park is located on the east side of Alma, which offers housing, education, recreation, and everyday services/needs.
 - Hospital in Alma
 - Alma College
 - Merrill Institute of Welding
- 4 community colleges within 50 miles
- 5 universities within 50 miles

- Visible from U.S. Highway 127, exit within 1 mile
- Interstate 69: 43 miles
- Interstate 75: 40 miles
- Michigan Highway 46: 2 mi.
- Class A roads
- Mid-Michigan Railroad within Park, connects to Great Lakes Central in Alma
- Gratiot Community Airport: 6 miles
- Capital City Airport: 53 mi.
- Chicago: 270 mi / 4.5 hours
- Cleveland: 280 mi / 4.5 hrs.
- Detroit: 141 mi / 2.5 hours
- Indianapolis: 301 mi / 5 hours
- Lansing: 53 mi / 1 hr.
- Saginaw: 38 mi / 45 min.
- Toronto: 325 mi / 6 hours

For more information, please contact:

Aeric Ripley, Interim Manager
City of Alma
(989) 463-8336
aripley@myalma.org
myalma.org



Jim Wheeler, President
Greater Gratiot Development
(989) 875-2083
jim.wheeler@gratiot.org

www.gratiot.org

ALMA INDUSTRIAL PARK

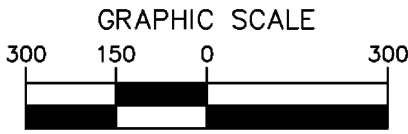


Michigan Ave. / Jerome Rd. / Williams St., Alma, Gratiot County, Michigan, USA

*For more information on available properties or current companies, click on the available parcel or company logo.

Legend

- Available building
- Available site
- Park boundaries
- Established lot line
- Combination lot line



City of Alma
 (989) 463-8336
 525 E. Superior St.
 Alma, MI 48801
www.myalma.org



Greater Gratiot Development, Inc.
 136 South Main, Ithaca, MI 48847
 Ph: (989) 875-2083
www.gratiot.org

For more information on Gratiot County's available sites, visit ggdi.gratiot.org or Scan this Smartphone QR Code:



This drawing is not to be used for design or construction purposes, or to establish permanent property boundaries. Proposed divisions are shown for marketing purposes only. The availability of parcel divisions is neither guaranteed or implied.

By: Wolverine Engineers & Surveyors, Inc.