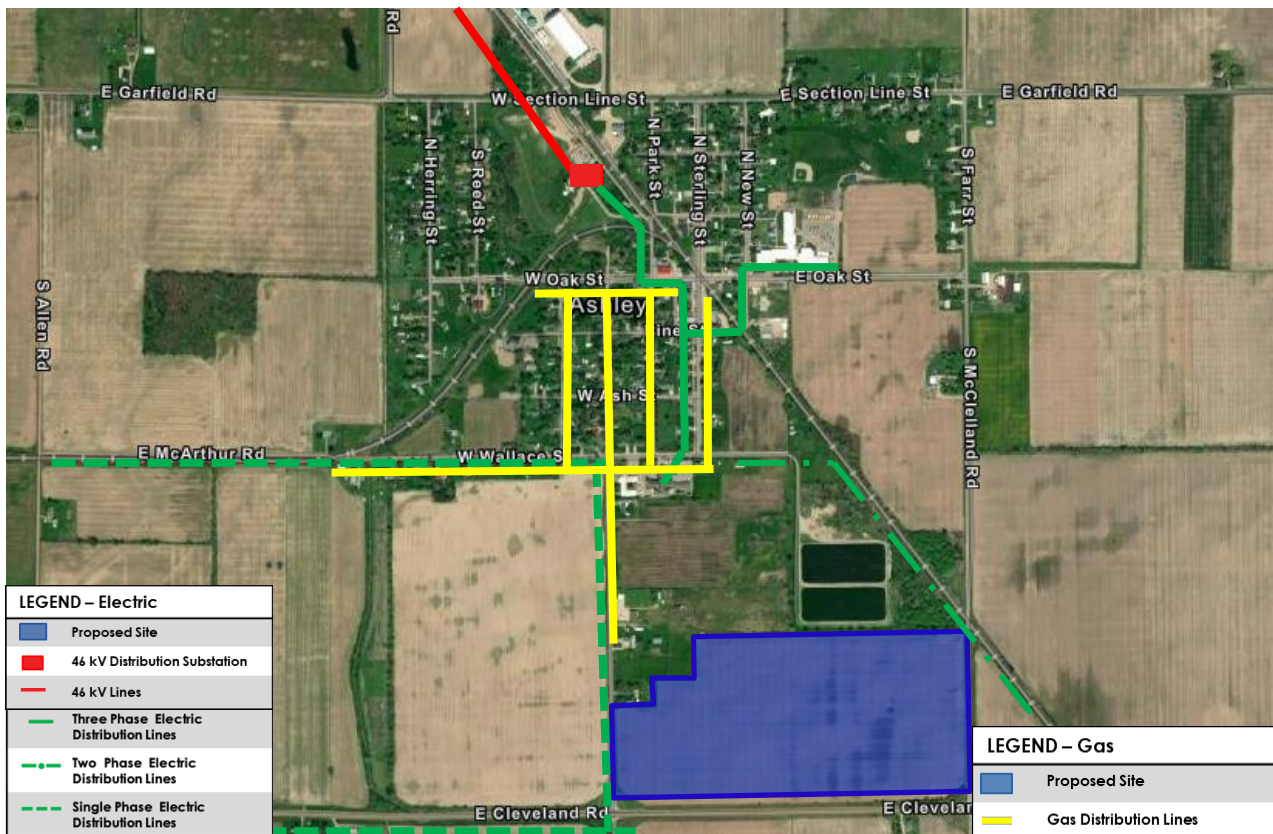


Gratiot County/Village of Ashley S. McClelland Rd & M-57



All existing facility locations are approximate and are not to be used for construction purposes. Always contact MISS DIG 811 before you dig.

Electric Site Benefits

- **Distribution System**
 - Predicted reliability of up to 99.88% for 4.8/8.32 kV system.
 - The distribution system is located adjacent to the site.
 - Current two-phase available capacity is 0.39MW. Additional capacity may be available with system upgrades.
- **46 kV System**
 - Predicted reliability of up to 99.99%. The predicted reliability percentage represents the estimated amount of time the facility is in service.
 - The 46 kV system is located approximately 0.9 miles away.
 - Facilities will be sized to meet the energy needs of the customer and available system capacity determined at the time of a specific request.

Natural Gas Site Benefits

- **Distribution System**
 - 2-inch medium-capacity gas main with a maximum allowable operating pressure (MAOP) of 60 psig is currently available along S. Arnold Rd.
 - Delivery pressure will depend on customer needs and hourly load.
 - System improvements may be needed based on hourly load and pressure needs.

For additional information

Michele Eaton, Economic Development Manager | 810-760-3497 | michele.eaton@cmsenergy.com