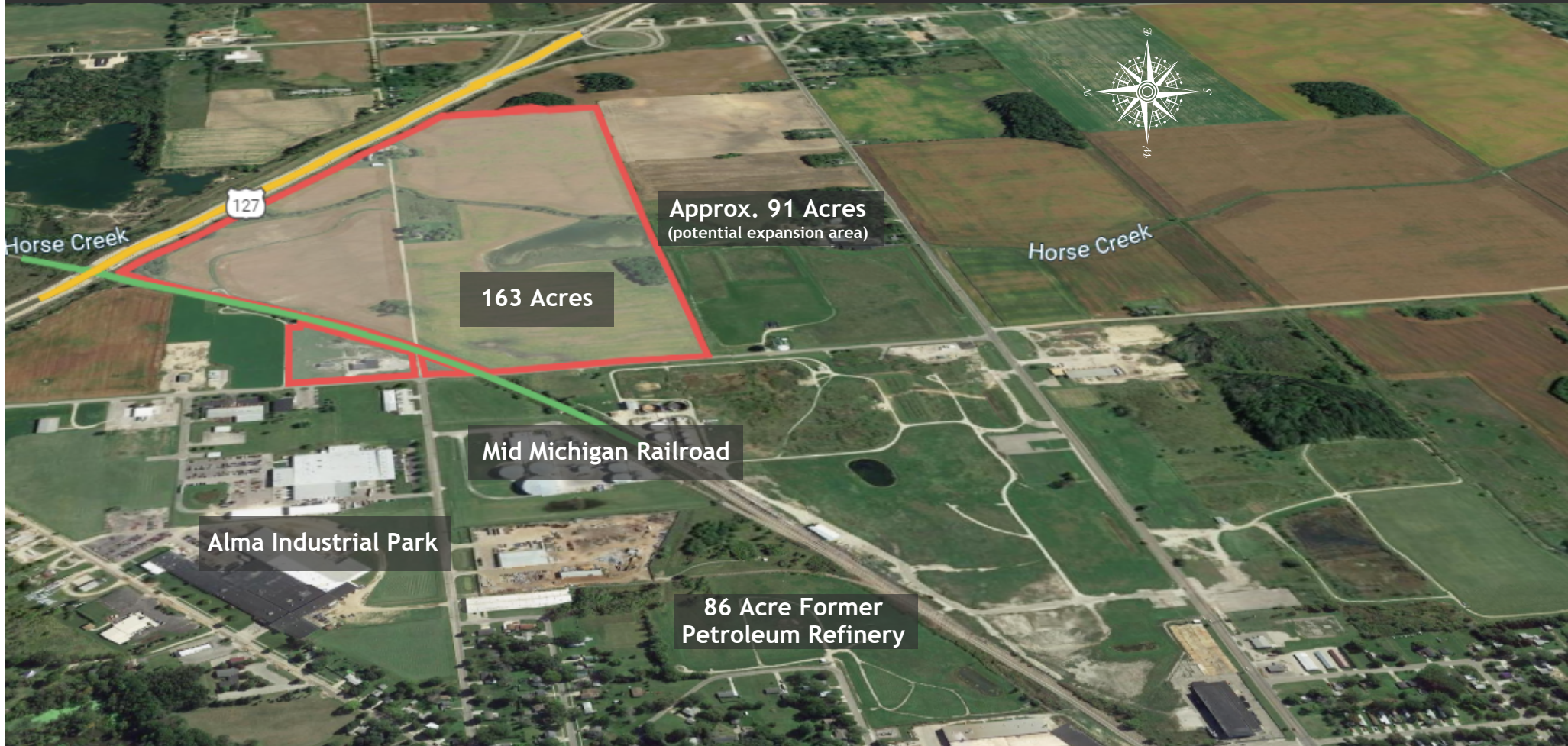


ALMA HOFFMAN ROAD INDUSTRIAL LOTS

Hoffman Road, Alma, Gratiot County, Michigan, USA



The City of Alma owns the outline area totaling approximately 163 acres. This renders the road (Hoffman) no longer necessary. The 91 acres to the immediate south could be used for an expansion area; however, it is comprised of six different property owners (some are residences). The former petroleum site could also be an option for potential expansion.

FOR MORE INFORMATION, CONTACT:



Matt Schooley
City Manager
989.463.8336
mschooley@ci.alma.mi.us
www.ci.alma.mi.us



Jim Wheeler
President
989.875.2083
jim.wheeler@gratiot.org
www.gratiot.org