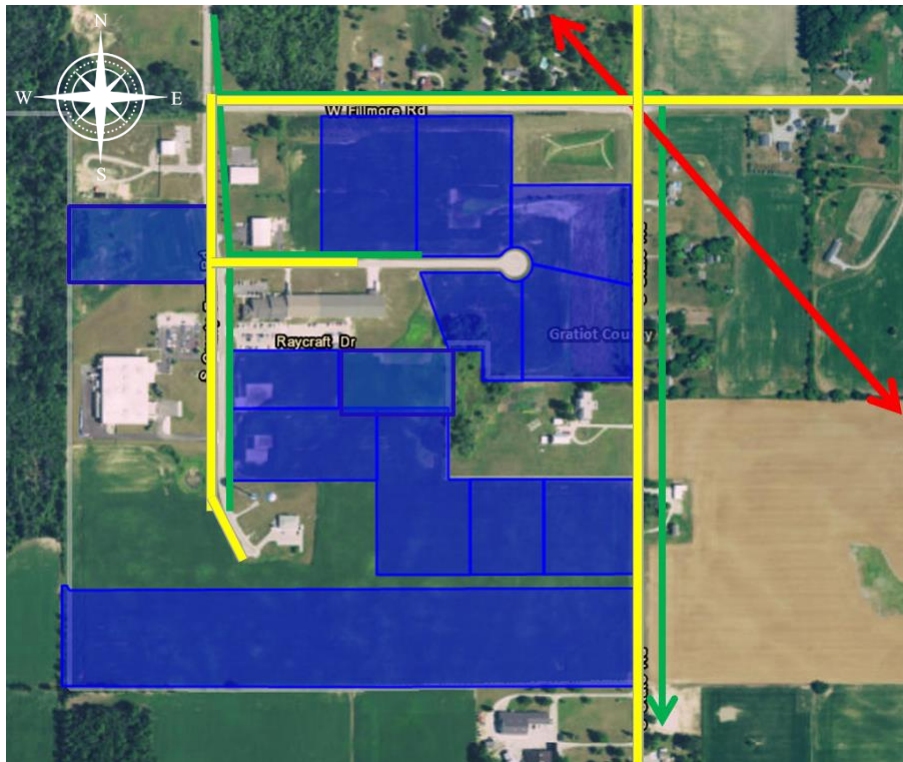


# Gratiot County/Ithaca South Ithaca Industrial Park



LEGEND - Electric and Gas	
	Proposed Site
	138/46 kV Distribution Substation
	138 kV Distribution Substation
	46 kV Distribution Substation
	138 kV Lines
	46 kV Lines
	Electric Distribution Lines
	Gas Distribution Lines
	Gas Transmission Lines

All existing facility locations are approximate and are not to be used for construction purposes. Always contact MISS DIG 811 before you dig.

## Electric Site Benefits

- **Distribution System**
  - Predicted reliability of up to 99.567% for 4.8/8.32kV system.
  - The distribution system is located inside and adjacent to the site.
  - Currently rated for a maximum electric demand of 1.4 MW.
- **46 kV System**
  - Predicted reliability of up to 99.987% . The predicted reliability percentage represents the estimated amount of time the facility is in service.
  - The 46kV system is located adjacent to the site.
  - Facilities would be sized to meet the energy needs of the customer and available system capacity determined at the time of a specific request.
- **138 kV System**
  - Predicted reliability of up to 99.993% . The predicted reliability percentage represents the estimated amount of time the facility is in service.
  - The 138kV system is located approximately 3 miles from the site.
  - Facilities would be sized to meet the energy needs of the customer and available system capacity determined at the time of a specific request.

## Electric Site Benefits

## Gas Site Benefits

### Gas Site Benefits

- Two inch medium-capacity gas main currently available within the industrial park.
- Multiple medium-capacity gas mains in the surrounding area.
- Up to 15 psig delivery pressures readily available, depending upon customer load requirements.
- Competitive delivery rates and minimal upfront costs.

## For additional information

Michele Eaton, Economic Development Manager | 810-760-3497 | [michele.eaton@cmsenergy.com](mailto:michele.eaton@cmsenergy.com)