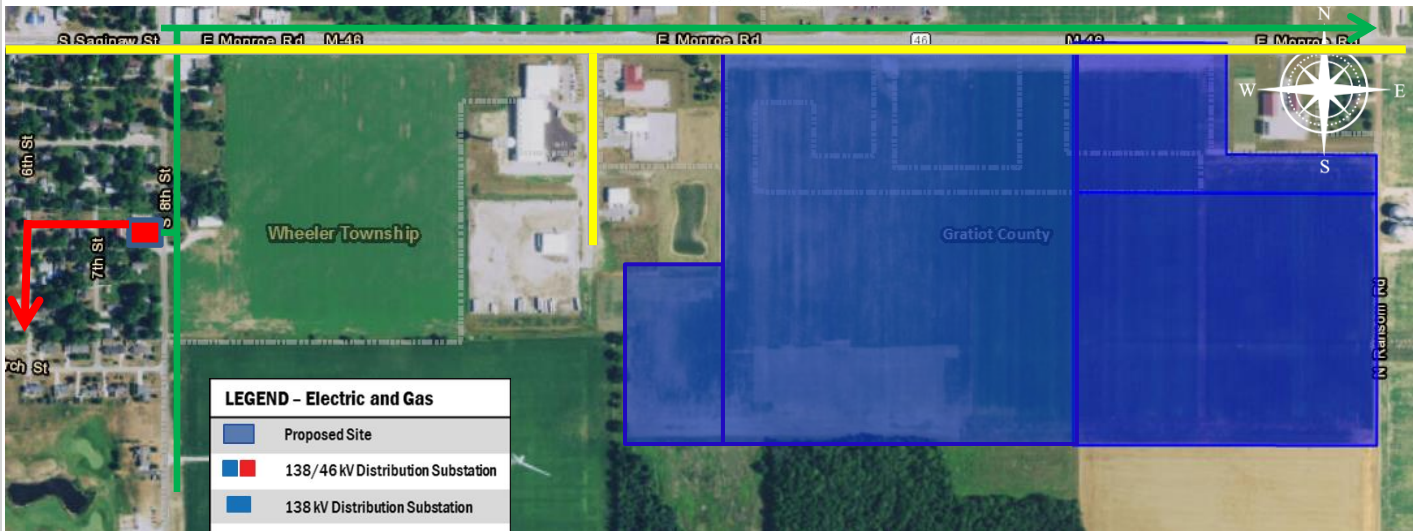


Energy Profile – Breckenridge, MI

Breckenridge Industrial, Technology, & Agribusiness Park



LEGEND - Electric and Gas	
	Proposed Site
	138/46 kV Distribution Substation
	138 kV Distribution Substation
	46 kV Distribution Substation
	138 kV Lines
	46 kV Lines
	Electric Distribution Lines
	Gas Distribution Lines
	Gas Transmission Lines

All existing facility locations are approximate and are not to be used for construction purposes. Always contact MISS DIG 811 before you dig.

Electric Site Benefits

- **Distribution system**
 - Predicted reliability of up to 99.800% for 4.8/8.32kV system.
 - The distribution system is located adjacent to site.
 - Currently rated for a maximum electric demand of 3 MW.
- **46 kV System**
 - Predicted reliability of up to 99.993% . The predicted reliability percentage represents the estimated amount of time the facility is in service.
 - The 46kV system is located approximately 0.75 miles west.
 - Facilities would be sized to meet the energy needs of the customer and available system capacity determined at the time of a specific request.
- **138 kV System**
 - Predicted reliability of up to 99.996% . The predicted reliability percentage represents the estimated amount of time the facility is in service.
 - The 138kV system is located approximately 6.5 miles north.
 - Facilities would be sized to meet the energy needs of the customer and available system capacity determined at the time of a specific request.

Gas Site Benefits

- Four inch high-capacity gas main currently available along E. Monroe Rd.
- Medium-capacity gas mains available along the west side of the parcel.
- Up to 100 psig delivery pressures readily available, depending upon customer load requirements.
- Competitive delivery rates and minimal upfront costs.

For additional information

Scott Corrin, Economic Development Manager | 517-374-2248 | scott.corrin@cmsenergy.com