

# Ithaca Industrial Park

Ithaca, Gratiot County, Michigan, USA

Updated: Dec. 2017

## Size:

- 67 gross acres
- 100% developed
- 74% occupied

## Available properties:

- Lot 5: 8,400 sq. ft. bldg. on 2.5 acres
- Lot 8: 1.85 acres
- Unplatted lot: 13.23 acres

## Price:

- \$6,000 / acre

## Incentives:

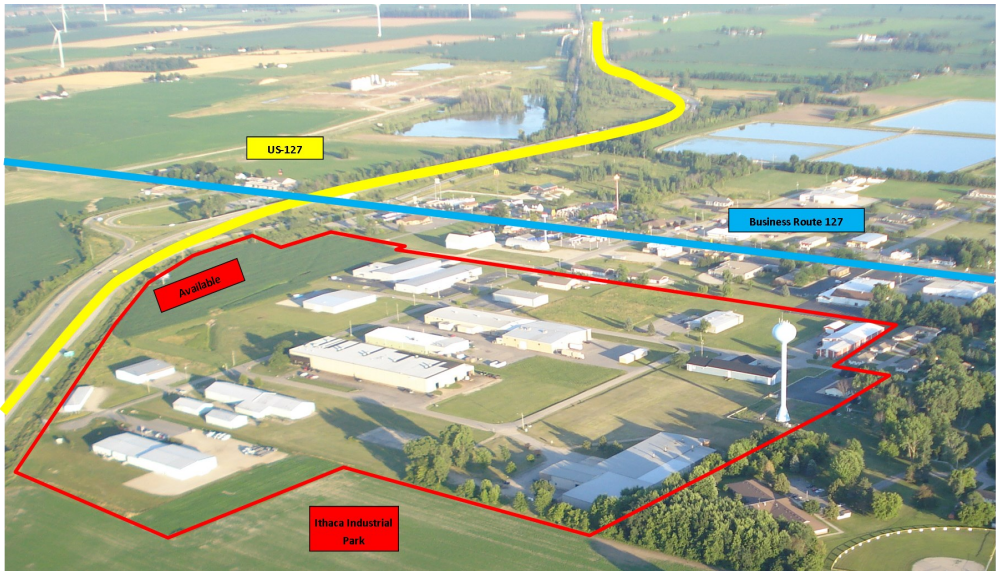
- Industrial Development District
  - Foreign Trade Zone 275 Member
- \*Other programs may be applicable depending on the project.

## Utilities:

- Electric: Consumers Energy
- Gas: Consumers Energy  
4" medium pressure
- Municipal water, 8" line
- Municipal sewer, 15" line
- Telecommunications: Frontier Fiber Optic, Digital Switching

## Transportation:

- Located on & visible from US Highway 127; Park within .25 mi
  - Interstate 69: 35 miles
  - Interstate 75: 46 miles
  - Michigan Highway 46: 9 miles
  - Michigan Highway 57: 9 miles
  - Class A roads
  - Great Lakes Central Railroad service in city
  - Gratiot Community Airport: 10 miles
  - Capital City Airport: 46 miles
- 
- Chicago: 262 miles / 422 km
  - Cleveland: 272 miles / 438 km
  - Detroit: 130 miles / 209 km
  - Indianapolis: 294 miles / 473 km
  - Lansing: 45 miles / 72 km
  - Saginaw: 42 miles / 68 km
  - Toronto: 318 miles / 512 km



## Site information:

- Michigan Certified Business Park
- Zoned appropriately for use
- Internal street lighting
- Underground infrastructure
- High speed internet access
- Site plan approved by local government

## Community information:

- Park is located along the east side of Ithaca. The area offers housing, education, recreation, and everyday services/needs.
- Hospital within 12 minutes
- Alma College: 10 miles
- Merrill Institute of Welding: 9 mi.

## County information (2016):

- Population: 41,202
- \*Labor force: 18,254
- \*Unemployment rate: 5.0%
- \*Commuter labor force:
  - 30 mile radius: 162,354
  - 60 mile radius: 1,029,958

\*Data from Michigan Labor Market

## Current tenants: (See map on reverse)

- [Aircraft Precision Products, Inc.](#)
- [Anchor Danly](#)
- [Craig Frames, Inc.](#)
- Doc's Storage
- DRB Transport
- [DuPont Pioneer](#)
- [E & S Graphics](#)
- [Ithaca Manufacturing Corporation](#)
- [Town and Country Group](#)
- [Trident Manufacturing](#)
- [Universal Bearings, Inc.](#)



For more information, please contact:

Chris Yonker, City Manager  
City of Ithaca  
129 W. Emerson St.  
Ithaca, MI 48847  
Ph.: (989) 875-3200  
Fax: (989) 875-4064  
manager@ithacami.com  
[www.ithacami.com](http://www.ithacami.com)



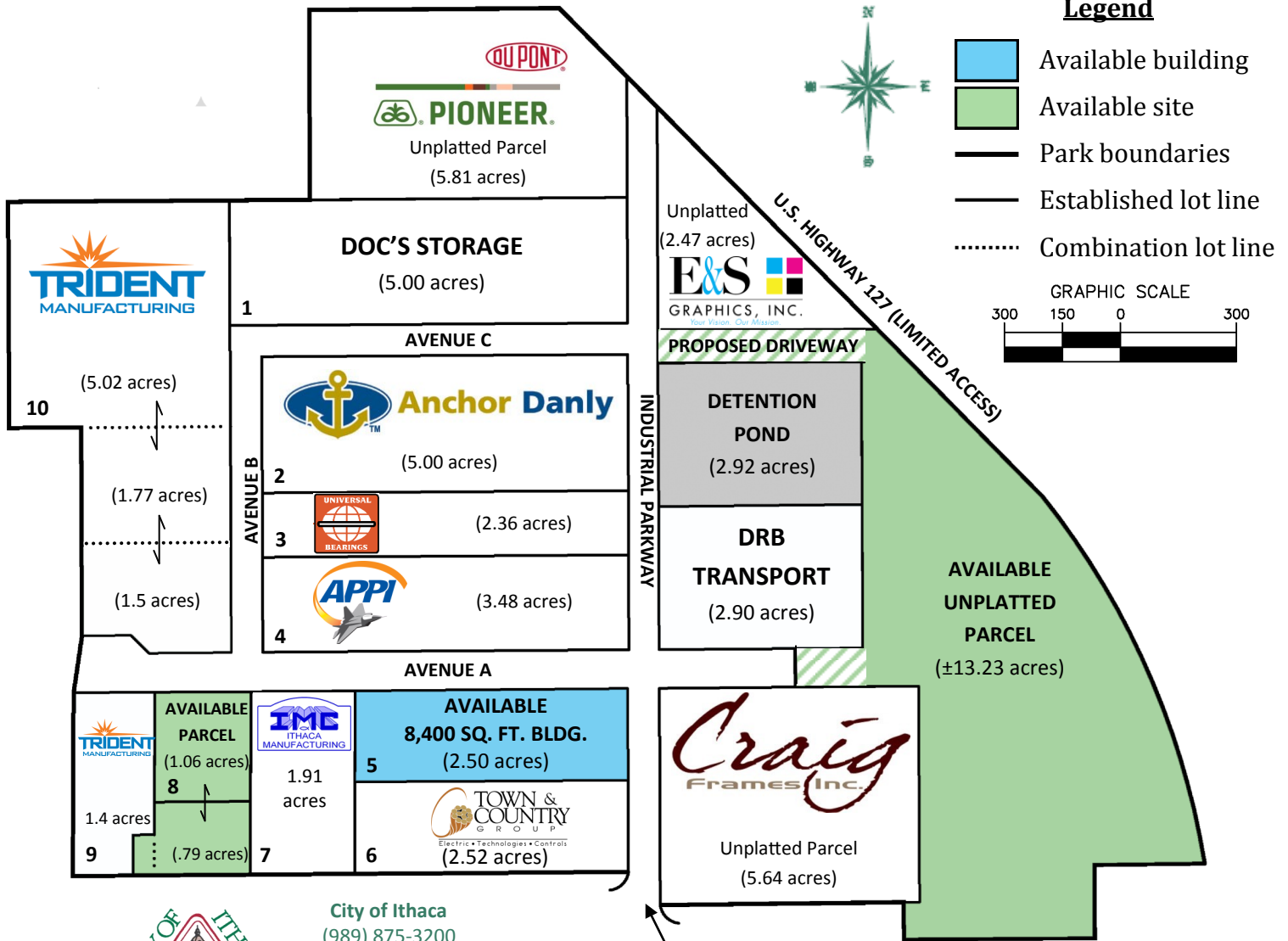
Jim Wheeler, President  
Greater Gratiot Development, Inc.  
136 S. Main St.  
Ithaca, MI 48847  
Ph.: (989) 875-2083  
Fax: (989) 875-2990  
jim.wheeler@gratiot.org  
[www.gratiot.org](http://www.gratiot.org)

# Ithaca Industrial Park

Ithaca, Gratiot County, Michigan, USA

Updated: Dec. 2017

\*For more information on available properties or current companies, click on the available parcel or company logo.



**City of Ithaca**  
 (989) 875-3200  
 129 W. Emerson St.  
 Ithaca, MI 48847  
[www.ithacami.com](http://www.ithacami.com)



**Greater Gratiot Development, Inc.**  
 136 South Main, Ithaca, MI 48847  
 Ph: (989) 875-2083  
[www.gratiot.org](http://www.gratiot.org)

Park entrance is approx. 500 ft. from Business Route US-127 (E. Center St.) and access to US Highway 127 North & South is less than a half-mile away.



This drawing is not to be used for design or construction purposes, or to establish permanent property boundaries. Proposed divisions are shown for marketing purposes only. The availability of parcel divisions is neither guaranteed or implied.

By: Wolverine Engineers & Surveyors, Inc.



For more information on Gratiot County's 5 Certified Business Parks, visit [www.gratiot.org](http://www.gratiot.org) or Scan this Smartphone QR Code:

